

DID YOU KNOW THAT MINNESOTA HAS A COBRA PREMIUM SUBSIDY PROGRAM??

ARE YOU BEING OFFERED COBRA THROUGH YOUR EMPLOYER?

If you are being offered COBRA from your employer, and you are eligible for the federal COBRA Premium subsidy (also called reduction), you may be able to get the Minnesota COBRA Premium Subsidy also. The federal premium subsidy program pays 65% of your premium and the Minnesota subsidy program will pay the other 35% if you are eligible. You may want to check with your employer to see if they provide COBRA.

THE MINNESOTA COBRA PREMIUM SUBSIDY

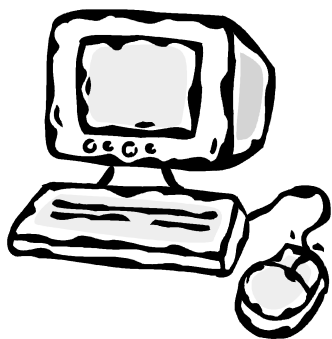
To be eligible for this program you must:

- Sign up for COBRA health care coverage. You must sign up for COBRA generally within 60 days of the date on the notice. But it is important to check on the specific date the last day you can make application. If you are not sure ask your employer.
- Be eligible for the federal COBRA premium subsidy.
- Meet the income and asset limits for a Minnesota health care program. This would be programs like Medical Assistance, Medicare or MNCare.



You must pay your COBRA premiums while your application is being reviewed. You will not be paid back for the premiums you had to pay while waiting.

HOW DO I FIND OUT MORE OR GET APPLICATIONS?



For more information about COBRA and the federal premium subsidy go to: www.dol.gov/ebsa/COBRA.html. Your employer should give you the COBRA application and the application for the federal COBRA Premium subsidy.

If you want information about the Minnesota COBRA Premium Subsidy go to: www.dhs.state.mn.us. It's easiest to type COBRA in the search bar to find information. You can also go to: www.health.state.mn.us/divs/hpsc/mcs/cobra.htm.

For Minnesota Premium Subsidy applications go to: www.dhs.state.mn.us/healthcare/COBRA. To have an application mailed to you, call (651) 431-3480 or toll free at (888) 702-9968.

If you are 60 or older, you can call the Senior LinkAge Line® at (800) 333-2433. If you are a person with a disability, you can call the Disability Linkage Line® at (866) 333-2466.

If you want information about Minnesota Health Care Programs go to: www.dhs.state.mn.us and click on the Health Care tab.