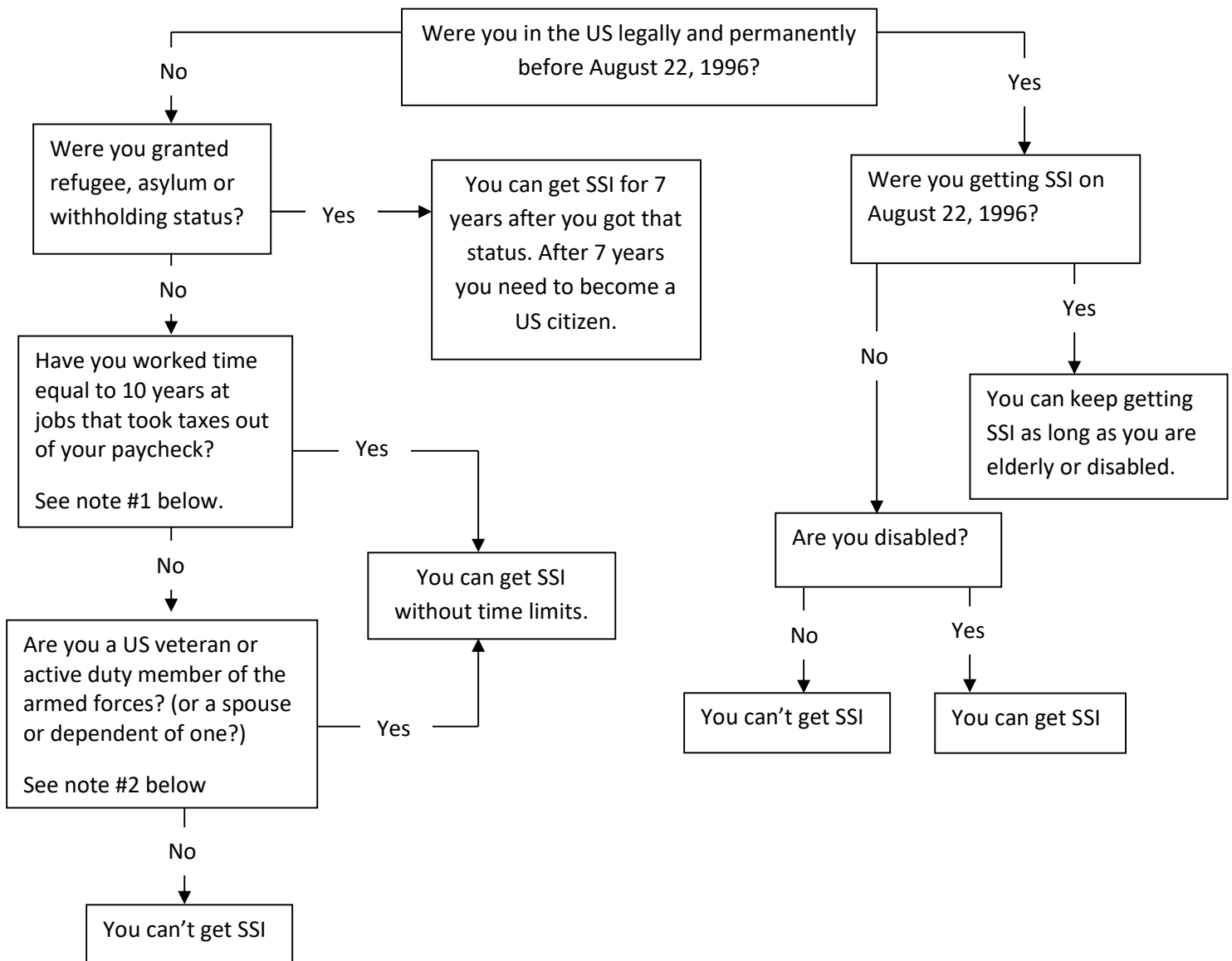


Okay, I fit into one of the immigration categories listed on page 1. Can I get SSI?



Note #1 - Work Time: Time that your spouse spends working counts as your work time. If you immigrated as a child, your parents' work time while you were a minor can be counted. It can be complicated. SSA helps you figure out work time.

You can't count work time for any month after December 31, 1996 if you got public benefits (AFDC, Food Stamps, SNAP, MA or MFIP) that month. Talk to SSA or a lawyer for details.

Note #2 – Hmong soldiers and veterans with sponsors:

Hmong soldiers who fought with the CIA during the Vietnam War are not "US veterans" under US law.

If you are a veteran or active duty member of the armed forces who came to the US through the petition of a relative after December 12, 1997, income and assets of your sponsor and your sponsor's spouse are counted as if they are your own. That could put you over the limit to be able to get SSI. But, if you do not have food and shelter because your sponsor is not supporting you, you may get benefits. You may also be able to get benefits if you have been abused by your spouse or parent, you no longer live with your abuser, and your need for benefits is because of the abuse.

Fact Sheets are legal information NOT legal advice. See a lawyer for advice.

© 2022 Minnesota Legal Services Coalition. This document may be reproduced and used for non-commercial personal and educational purposes only. Reproduction, distribution, and use for commercial purposes are strictly prohibited.